



## Starfish - Student Instructions

### "Raising Your Hand" Assignment



South Texas College has implemented the Starfish Early Alert system to assist in communication between faculty and students. In an effort to optimize Starfish as an Early Alert System, students are being encouraged to set up their profiles and complete the assignment by clicking on the "Raising Your Hand" flag.

South Texas College wants to ensure that students are aware of new tools that are available to them to help keep them on the right path to successfully completing their courses and graduate.

The following instructions were developed to help students participate in the "Raising Your Hand" assignment.

### Raising Your Hand Assignment

Step 1: Click on JagNet on the top of the South Texas College web page and log on using your JagNet credentials (username and password). Refer to Figures 1 and 2 below.

Figure 1.

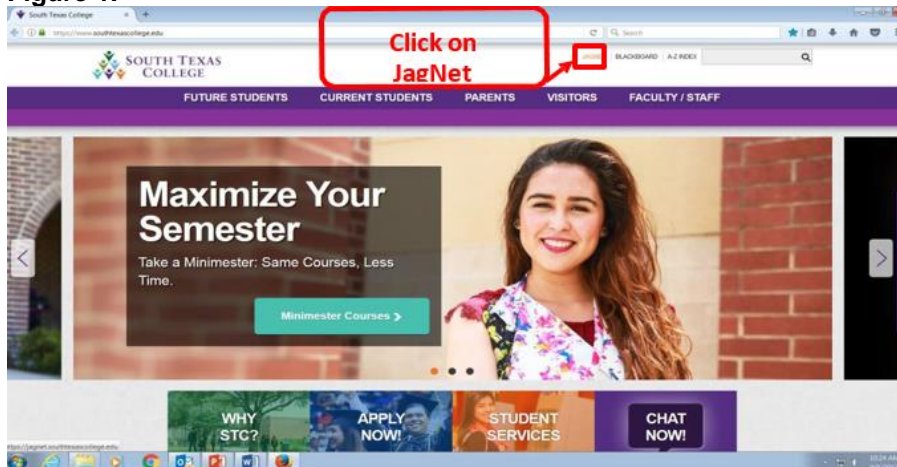
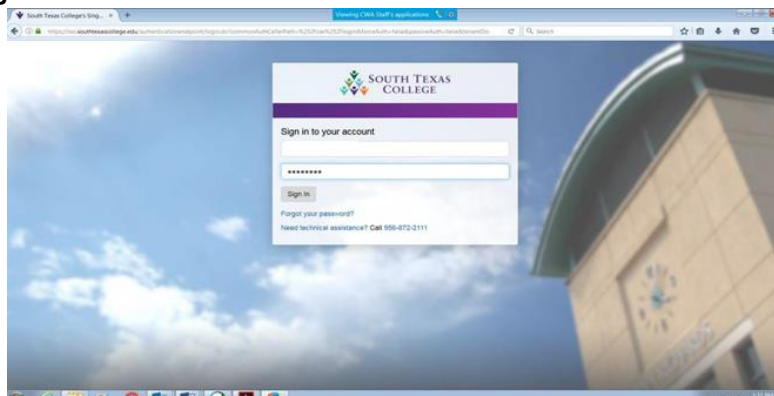
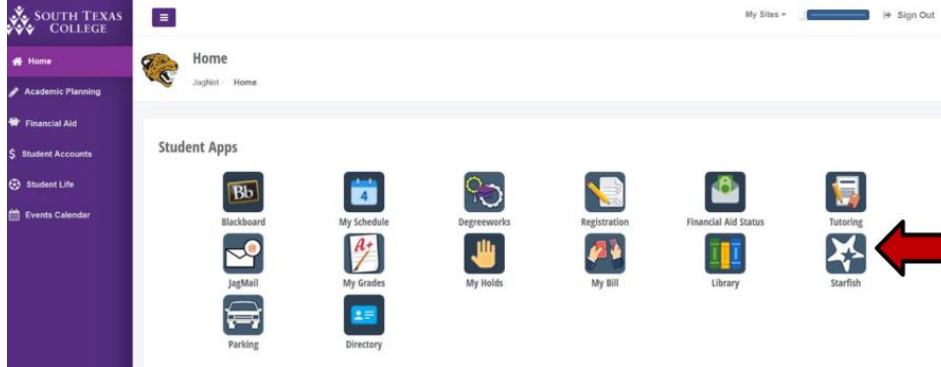


Figure 2.



**Step 2:** Once you are logged on to JagNet, scroll down to the Student Apps section and click on the Starfish Icon. You will be prompted and directed to a new page/screen. Refer to Figure 3 below.

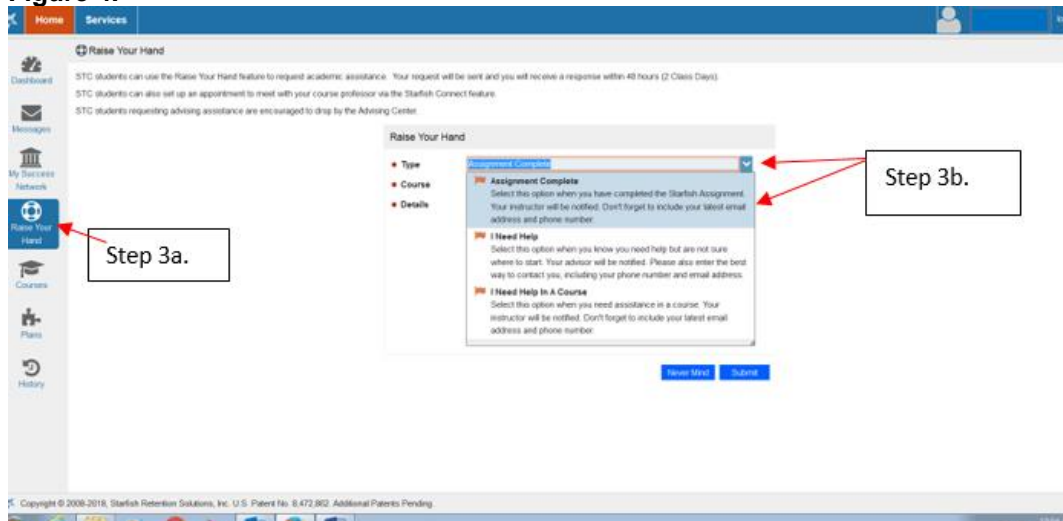
**Figure 3.**



**STEP 3:** Click on the “Home” button on the top left side of your screen. Refer to Figure 4 below.

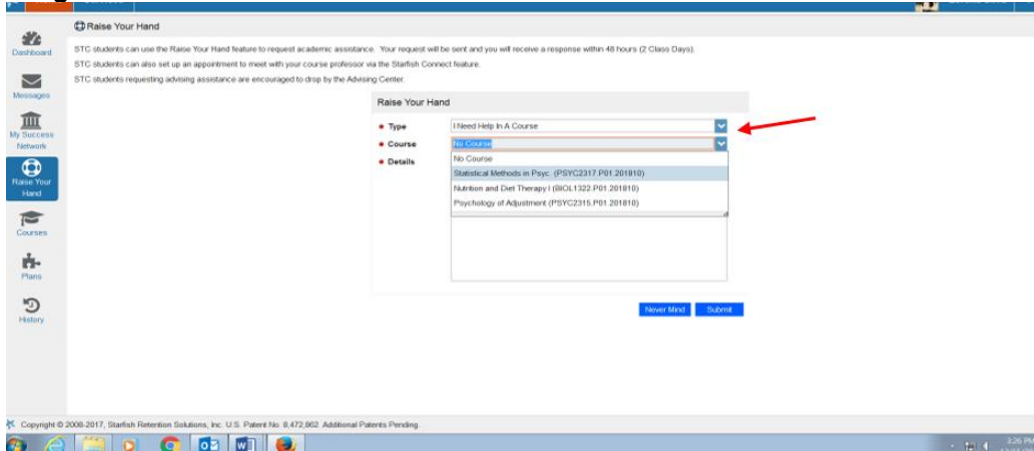
- 3a. Click on the “Raise Your Hand” button on the left middle side of the page.
- 3b. Hover over the drop down arrow, and choose “Assignment Complete”.

**Figure 4.**



**STEP 4:** Hover over the drop down arrow to choose the Course you need help with, and click on it. Next, add a description, if you wish but not necessary, and click on the “Submit” button. Refer to Figure 5 below.

**Figure 5.**



**Note:** During the semester, you can also use the “Raise Your Hand” feature to reach out to your faculty or Advisor. To reach your faculty, you can select “I Need Help In A Course”. To reach your Advisor, you can select “I Need Help”.

**It is important to stay on track, complete your courses, fulfill the requirements on your degree plan, and graduate on time.**

For additional questions, please contact:  
Maricela G. Silva, Ed.D.  
Academic Grants & Projects Officer  
(956) 872-8313  
mgsilva1@southtexascollege.edu